

## Light load range

---

Technical data/Properties ..... Page 29

Right angle tube connector..... Page 34

Axially parallel tube connector..... Page 40

Hinge tube connector ..... Page 43

Anti-Twist-System ..... Page 31, 50, 51

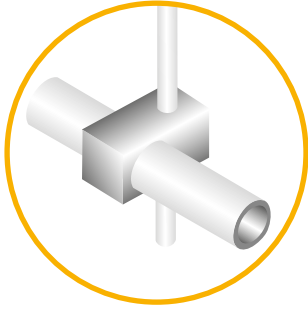
Accessories ..... Page 54

**RK Light Clamps**

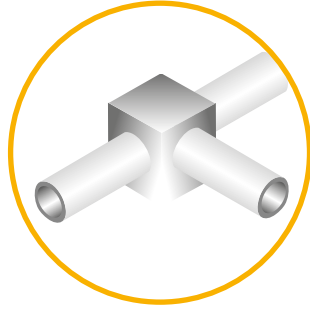
**Light load range**

...the constructive plastic element connecting technology

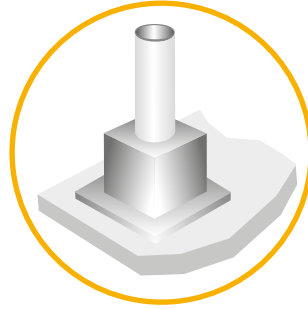
• Right angle tube connector



Cross clamps

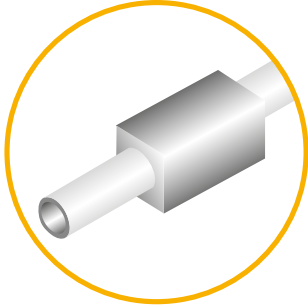


Angle clamps

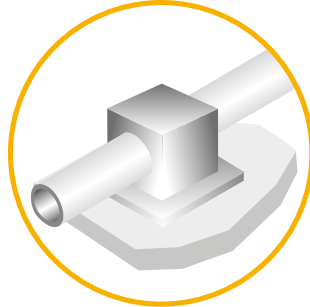


Base clamps

• Axially parallel tube connector

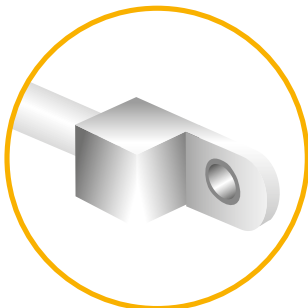


Sleeve clamps

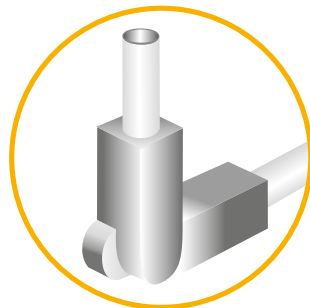


Flange clamps

• Hinge tube connector

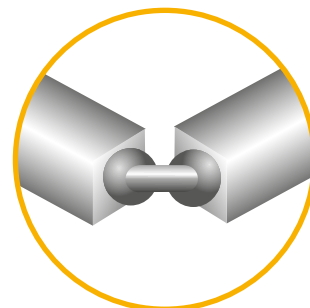


Strap clamps



Hinge clamps

• Ball joint tube connector



Light clamps ball joint

## Table of contents

<p><b>Right angle tube connector</b> (Single-pcs and multi-pcs elements)</p>	<p>Cross clamps ..... p. 34</p> <p>Angle clamps ..... p. 36</p> <p>Base clamps ..... p. 38</p>
<p><b>Axially parallel tube connector</b> (Single-pcs and multi-pcs elements)</p>	<p>Sleeve clamps ..... p. 40</p> <p>Flange clamps ..... p. 41</p>
<p><b>Hinge tube connector</b> (Single-pcs and multi-pcs elements)</p>	<p>Strap clamps ..... p. 43</p> <p>Hinge clamps ..... p. 45</p> <p>Ball joint clamps ..... p. 38</p>
<p><b>Anti-Twist-System</b></p>	<p>Operating principle ..... p. 31</p> <p>Anti-rotation (R-clip), slot profile..... p.31</p>
<p><b>Accessories</b></p>	<p>Reducing bushes Ø ..... p. 54</p> <p>Reducing insert □ ..... p. 54</p> <p>Clamping lever ..... p. 55</p> <p>Screws – Zinc-plated steel ..... p. 55</p> <p>Screws – Stainless steel ..... p. 55</p>
<p><b>Properties</b></p>	<p>Resistance to chemicals ..... p. 56</p>

## RK Light Clamps

# Light load range

Version:

- Light Clamps



Single-piece elements

- For faster and more economic assembly



Multi-piece elements

- For add-on assembly and upgrading



### Features:

- Only one element per type (Ø18 / Ø30 / □ 30)
- Elements made of reinforced polyamide
- Closed elements or half cups
- Tube clamping of different diameters or sections due to a special bush system. Every bush form is worked with the needed tube diameter. Two basic diameters can be flexibly adapted with reducing bushes

- Anti turning device for the bush former due to a lokation pin in the bush
- Attractive design, low dead load
- Zinc plated screws
- Restistance against corrosion and agressive substances. Applicable e.g. in the food packaging industry
- Compatibility to the BLOCAN® profile system

### Options:

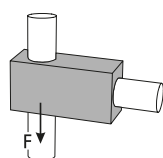
- Equipped with stainless steel screws for usage in the food industry and the wet areas in the beverage industry



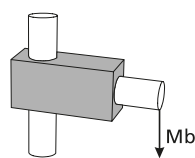
## Loads

### Attention!

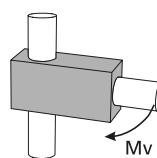
The data in the chart do not ensure a guarantee of quality or a warrant characteristic of our products. These are nonbinding standard values which might be not reached in individual cases due to the temperature or surface finish of the clamping profile.



Adhesion force F [KN]



Bending moment Mb [Nm]



Twisting moment Mv [Nm]

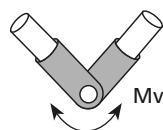
Tightening torque max:

Sizes: 10 – 18: 2,5 Nm

Sizes: 20 – 30: 8,0 Nm

Material data sheet available upon request.

Sizes Type	□10			Ø12 - 18			□20			Ø20 - 30			□30			Ø30		
	F	Mb	Mv	F	Mb	Mv	F	Mb	Mv	F	Mb	Mv	F	Mb	Mv	F	Mb	Mv
Cross clamps																		
K-KU	0,30	130	15	0,50	111	5	0,50	164	31	1,00	184	11,50						
KV-KU													1,30	122	23	1,60	120,50	19
KVR-KU Insert													1,40	136	23	1,60	142,50	19
KVR-KU Bushes													0,60	134,50	30,50	1,80	107,50	19
Angle clamps																		
W-KU	0,20	91	8	0,60	83	4,50	0,60	153,50	30	1,00	177	10,50						
WV-KU													1,00	136,50	23	1,40	109,50	15,50
Base clamps																		
FS-KU	0,20	36	11	0,40	40	2,50	0,60	158	31	1,10	181,50	13						
FV-KU													1,00	77	23	1,60	72	19,50
Sleeve clamps																		
M-KU	0,10	91	8	0,50	75,50	4	0,70	225,50	31	1,00	242,50	11,50						
Flange clamps																		
FK-KU	0,20	35	7,50	0,40	38,50	4	0,60	134,50	31	1,20	137,50	12,50						
FKV-KU													1,30	144,50	23	1,60	142,50	20,50
V-KU													0,90	-	23	1,20	-	15,50
Strap clamps																		
LP-KU	0,30	16	7,50	0,40	18,50	4,50	0,70	38,50	27	0,90	41,50	11,50						
LPZ-KU	0,40	16	7,50	0,50	18,50	2,50	0,70	43	28	0,90	45,50	12						
LW-KU	0,20	27,50	7,50	0,70	27,50	4	0,80	40,50	31	1,10	41	14						
LF-KU																		



Twisting moment Mv [Nm]

Sizes Type	□10		Ø12 - 18		□20		Ø20 - 30		□30		Ø30	
		Mv		Mv		Mv		Mv		Mv		Mv
Hinge clamps												
GW-KU without tothing		1,50		1,70		4,00		4,20				
GWZ-KU with tothing												
GP-KU without tothing		1,10		1,50		2,50		2,10				
GPZ-KU with tothing												
GF-KU without tothing												
GFZ-KU with tothing		27		23		68		68				

## RK Light Clamps

# Light load range

### Reducing bushes / -insert size

You can choose the size of the insert you want to introduce into the clamping element between 10 and 25 mm.

The basic size of the round tubular connections is either 18 or 30mm. For any other required diameter the corresponding reducing bush can be delivered.

Should you work with square tubes, which offer a choice between 10 and 20 mm, reducing bushes are a necessity.

### Order instruction and accessories

The clamping elements are automatically provided with a zinc-plated fixation screw. Also, stainless steel screws and plastic levers can be optionally ordered for the fixation.

The reducing bushes and -inserts are not included in the standard delivery. They are separately listed in the accessory chapter.

### Applications:

- Areas of the laboratory technology
- Food industry
- Wet area in the beverage industry
- Photo technical applications

### Reducing bushes / -insert form

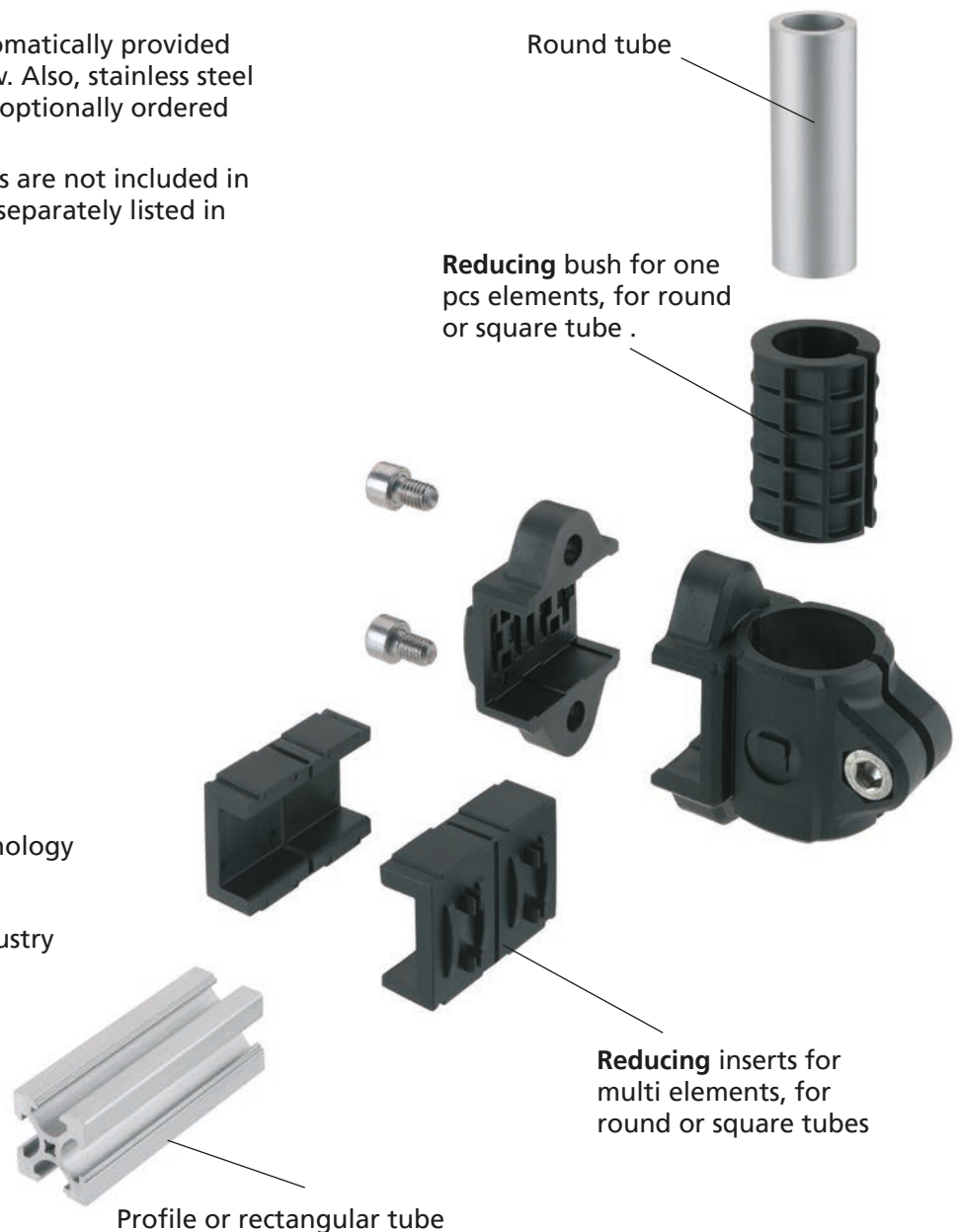
Not only can you choose the diameter of the reducing bush you require, you also have the possibility to choose its form. All you need to do is to choose the tube section you would like to work with.

#### The following forms are at your disposal:

1. For round tubes  $\varnothing$
2. For square tubes  $\square$

Detailed information for the reducing bushes and inserts can be found in the chapter accessories page 52

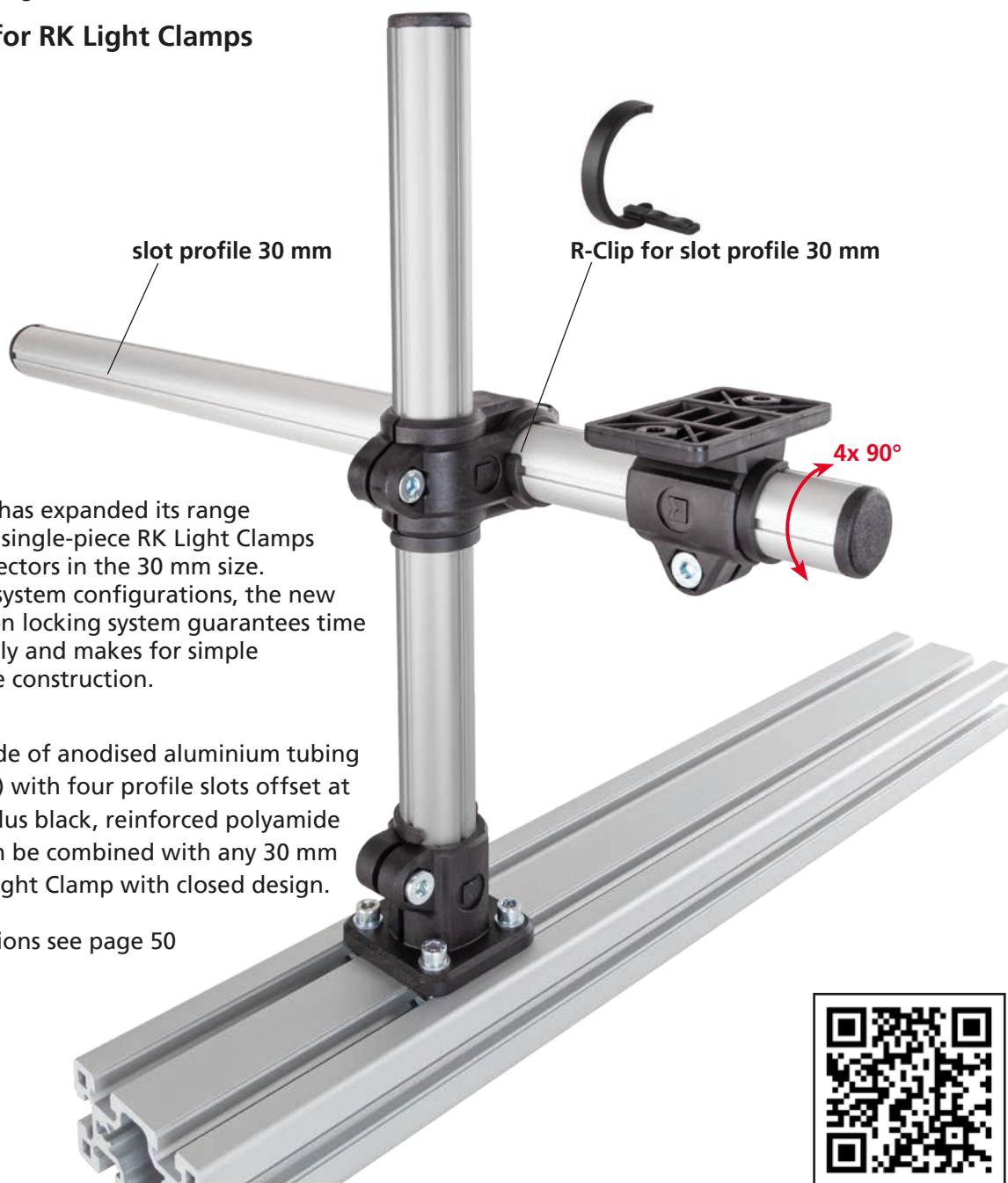
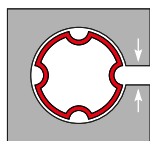
#### The variable reduction sleeve concept :



The illustration shows an element of type KVR. This element is a half-cup element.

## Anti-Twist-System

### Anti-rotation for RK Light Clamps – single-piece



RK Rose+Krieger has expanded its range of accessories for single-piece RK Light Clamps plastic tube connectors in the 30 mm size. When used with system configurations, the new Anti-Twist rotation locking system guarantees time savings in assembly and makes for simple adjustment of the construction.

The system is made of anodised aluminium tubing (30 mm diameter) with four profile slots offset at an angle of 90° plus black, reinforced polyamide plastic clips. It can be combined with any 30 mm single-piece RK Light Clamp with closed design.

Ordering instructions see page 50



Video  
How it works  
Anti-Twist-System

#### Your added value:

**Safe** - anti-rotation in 90° steps

**Stable** - absorption of up to three times higher torsional moments

**Fast** - Significant time savings during assembly

**Efficient** - Complex systems can be assembled by one person

**Simple** - Clips can be mounted without tools

**Compatible** - Can be used with closed RK Light Clamps Ø 30

#### It's that easy:

- Slide the pipe connector onto the groove profile
- Pre-position the tube connectors axially
- Push the clips by hand onto the groove profile into the pipe connectors
- Tighten the clamping screw - done!

# Overview

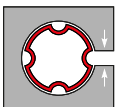
Right angle tube connector



Axially parallel tube connector



Hinge tube connector



Usable for  
Anti-Twist-System



## RK Light Clamps

# Cross clamps

### Order instruction:

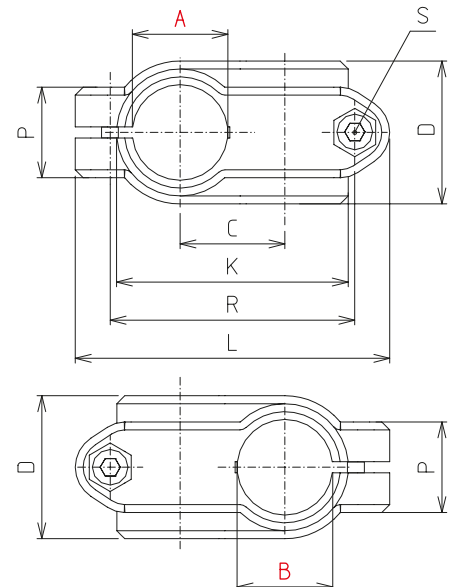
- Purchase only in lot sizes and a multiple of that, see product table below
- Inserts and bushes for diameter/cross-section changes see accessories page 54
- Standard: equipped and preassembled with galvanised screws
- Clamping levers have to be ordered separately, delivery unassembled  
See table last column and page 55

### On request:

- Stainless screws



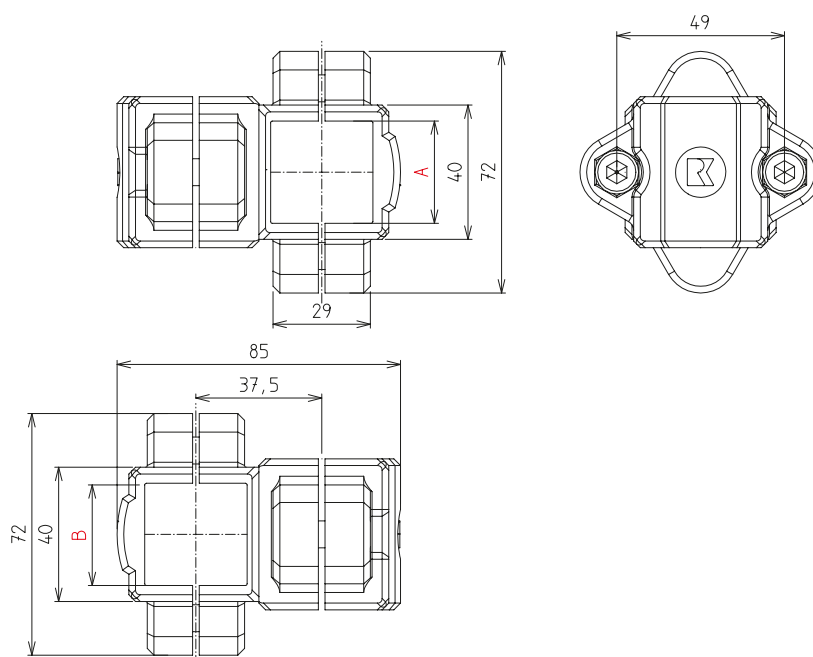
Anti-twist system  
applicable with Type 30



## Cross clamp K-KU

[mm]

Code No.	Type	lot sizes	Clamping *		C	D	K	L	P	R	Weight m [g]	Clamping lever S Code No.
			A	B								
K00018ACSR18R18	12-18	10, 20, 30... pcs	18		20	30	48	63	21	48	50	93024
K00030ACSR30R30	20-30	5, 10, 15... pcs	30		33	45	72	99	28,5	77	132	902381

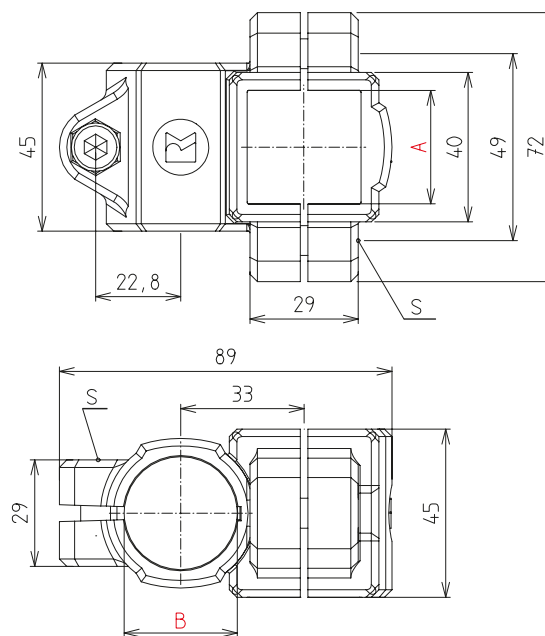


### Cross clamp KV-KU

Code No.	Type	lot sizes	Clamping* [mm]		Weight m [g]
			A	B	
K00530ACSV30V30	20-30	5, 10, 15... pcs	30		171



Anti-twist system applicable with Type 30



### Cross clamp KVR-KU

Code No.	Type	lot sizes	Clamping* [mm]		Weight m [g]
			A	B	
K00430ACSR30V30	20-30	5, 10, 15... pcs	30		117

\*Reduction of the diameter or cross section of the clamping with bushes possible (Accessories p. 54).

## RK Light Clamps

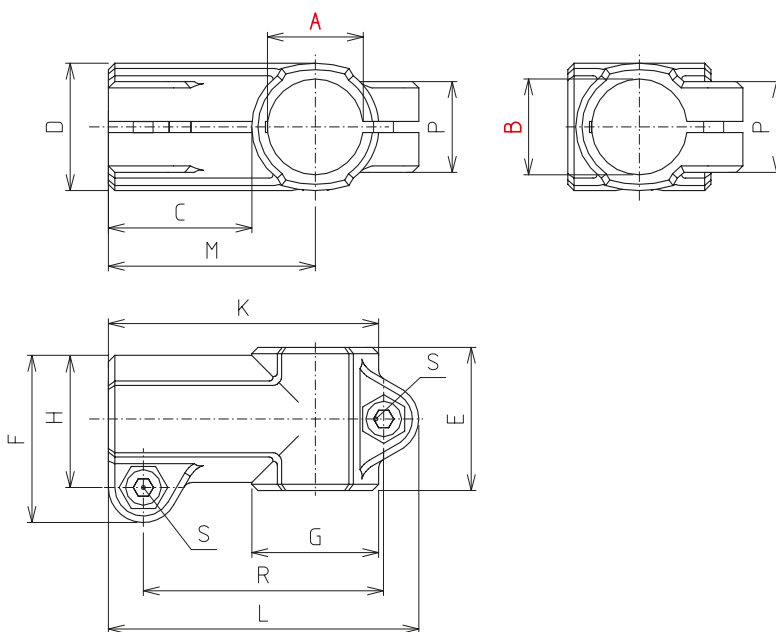
# Angle-/Base clamps

### Order instruction:

- Purchase only in lot sizes and a multiple of that, see product table below
- Inserts and bushes for diameter/cross-section changes see accessories page 54
- Standard: equipped and preassembled with galvanised screws
- Clamping levers have to be ordered separately, delivery unassembled See table last column and page 55

### On request:

- Stainless screws



Anti-twist system applicable with Type 30

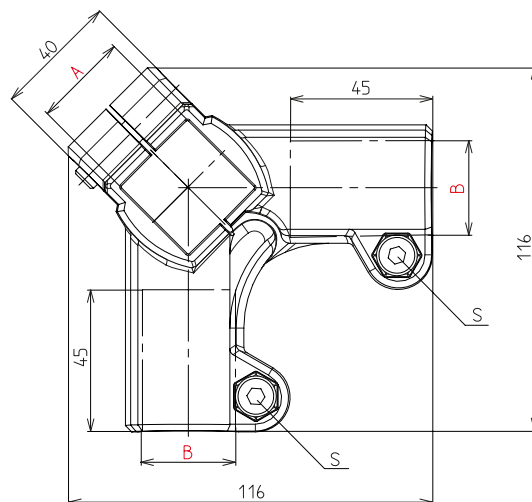
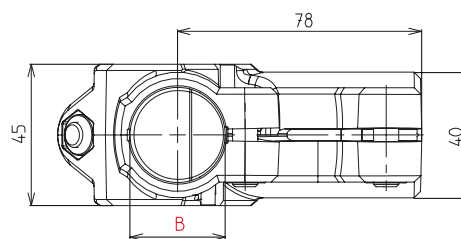


## Angle clamps W-KU

Code No.	Type	lot sizes	Clamping*		[mm]													Weight m [g]	Clamping lever S Code No.
			A	B	C	D	E	F	G	H	K	L	M	P	R				
K10018ACSR18R18	12-18	10, 20, 30... pcs	18		30,5	25	30	34	25	26,5	55,5	64,5	43	21	49,5	44	93024		
K10030ACSR30R30	20-30	5, 10, 15... pcs	30		45	40	45	52,5	40	41,5	85	97,5	65	28,5	75,5	115	902381		



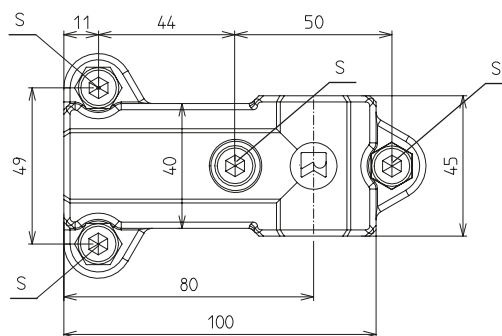
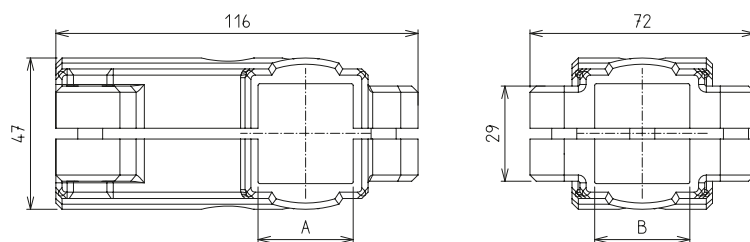
Anti-twist system applicable with Type 30



### Angle clamps WER-KU

[mm]

Code No.	Type	lot sizes	Clamping *		Weight m [g]	Clamping lever S Code No.
			A	B		
K10630ACSR30R30V30	20-30	4, 8, 12... pcs	30,1	30,3	189	902381



### Angle clamps WV-KU

[mm]

Code No.	Type	lot sizes	Clamping *		Weight m [g]	Clamping lever S Code No.
			A	B		
K10430ACSV30V30	20-30	5, 10, 15... pcs	30		194	902381

## RK Light Clamps

# Angle-/Base clamps

### Order instruction:

- Purchase only in lot sizes and a multiple of that, see product table below
- Inserts and bushes for diameter/cross-section changes see accessories page 54
- Standard: equipped and preassembled with galvanised screws
- Clamping levers have to be ordered separately, delivery unassembled  
See table last column and page 55

### On request:

- Stainless screws

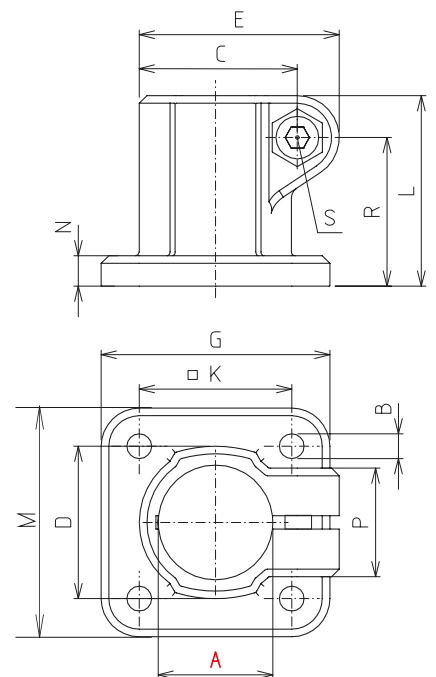


Anti-twist system applicable with Type 30



FS-KU 18/2

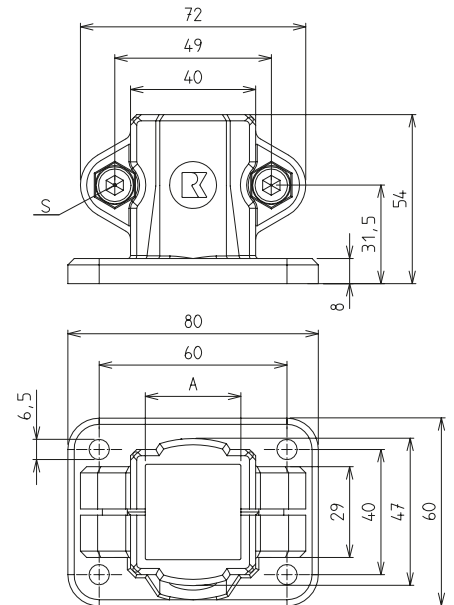
\* Dimension of K are turned by 90° with a distance of 38-40 mm (slotted hole)



## Base clamps FS-KU

[mm]

Code No.	Type	lot sizes	Clamping* A	B	C	D	E	G	K	L	M	N	P	R	Weight m [g]	Clamping lever S Code No.
K30018ACSR18	12-18	10, 20, 30... pcs	18	5,3	26,5	26	34	45	30	32	45	5	21	24,5	30	93024
K30118ACSR18	18/2	10, 20, 30... pcs	18	5,5	26,5	26	34	30	38	32	50	5	21	18,5	30	93024
K30030ACSR30	20-30	5, 10, 15... pcs	30	6,5	41,5	40	52,5	60	40	50	60	8	28,5	39	75	902381



## Base clamps FV-KU

Code No.	Type	lot sizes	Clamping * A	Weight m [g]	Clamping lever S Code No.
K30530ACSV30	20-30	5, 10, 15... pcs	30	121	<b>902381</b>

\*Reduction of the diameter or cross section of the clamping with bushes possible (Accessories p. 54).

## RK Light Clamps

# Sleeve-/Flange clamps

### Order instruction:

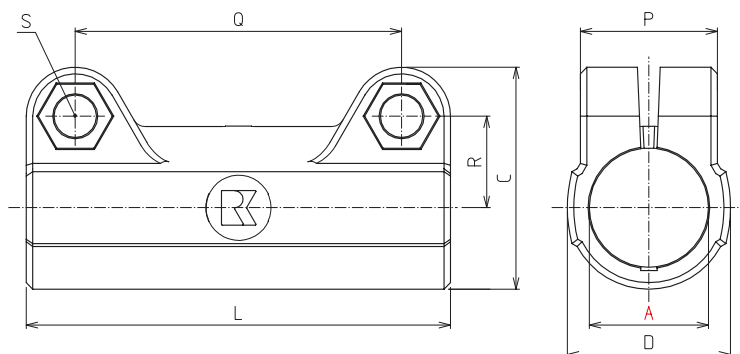
- Purchase only in lot sizes and a multiple of that, see product table below
- Inserts and bushes for diameter/cross-section changes see accessories page 54
- Standard: equipped and preassembled with galvanised screws
- Clamping levers have to be ordered separately, delivery unassembled  
See table last column and page 55

### On request:

- Stainless screws



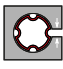
Anti-twist system applicable with Type 30

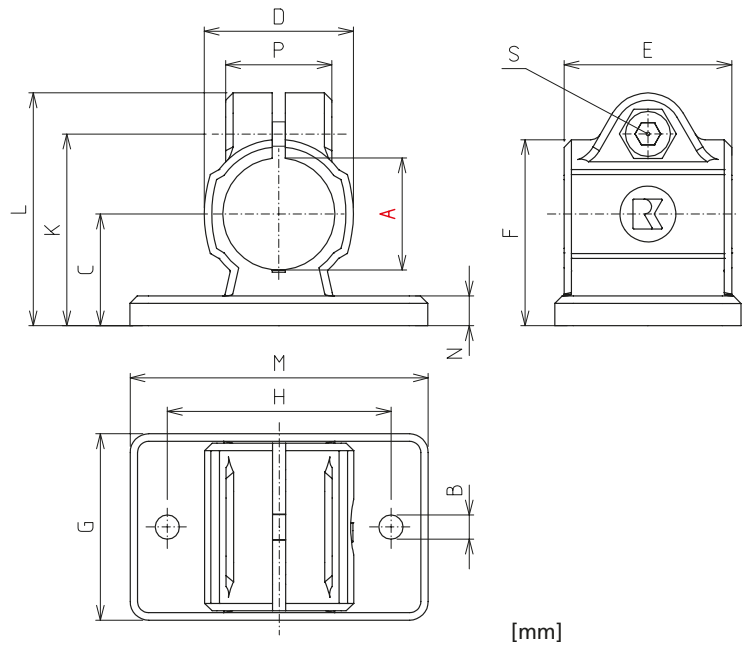


## Sleeve clamp M-KU

[mm]

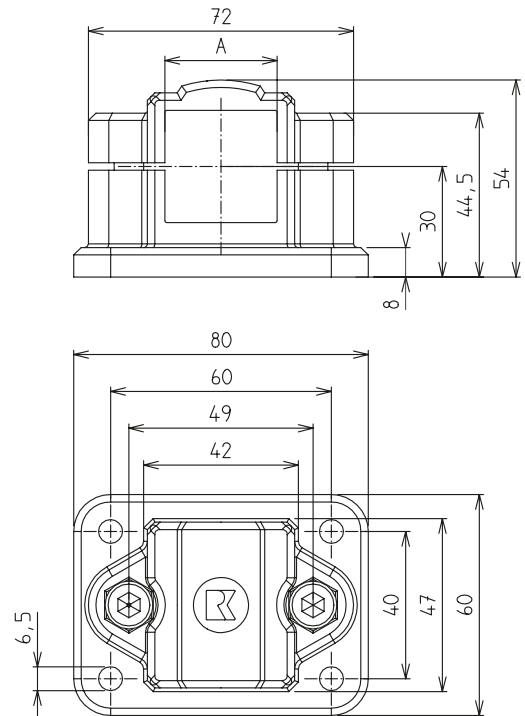
Code No.	Type	lot sizes	Clamping*		C	D	L	P	Q	R	Weight m [g]	Clamping lever S Code No.
			A	B								
K40018ACSR18R18	12-18	10, 20, 30... pcs	18		34	25	65	21	50	14	28	93024
K40030ACSR30R30	20-30	5, 10, 15... pcs	30		52,5	40	95	28,5	73	22,8	87	902381

 Anti-twist system applicable with Type 30



**Flange clamp FK-KU**

Code No.	Type	lot sizes	Clamping* A	B	C	D	E	F	G	H	K	L	M	N	Weight m [g]	Clamping lever S Code No.
K20018ACSR18	12-18	10, 20, 30... pcs	18	5,3	18	25	30	30,5	35	40	32	39,5	50	5	30	93024
K20030ACSR30	20-30	5, 10, 15... pcs	30	6,5	30	40	45	50	50	60	52,8	62,5	80	8	84	902381



**Flange clamp FKV-KU**

Code No.	Type	lot sizes	Clamping* A	Weight m [g]
K20530ACSV30	20-30	5, 10, 15... pcs	30	125

\*Reduction of the diameter or cross section of the clamping with bushes possible (Accessories p. 54).

## RK Light Clamps

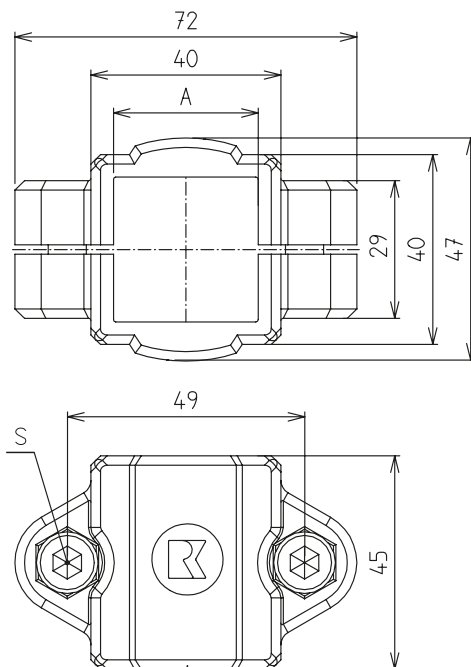
# Flange-/Strap clamps

### Order instruction:

- Purchase only in lot sizes and a multiple of that, see product table below
- Inserts and bushes for diameter/cross-section changes see accessories page 54
- Standard: equipped and preassembled with galvanised screws
- Clamping levers have to be ordered separately, delivery unassembled See table last column and page 55

### On request:

- Stainless screws



## Flange clamp V-KU

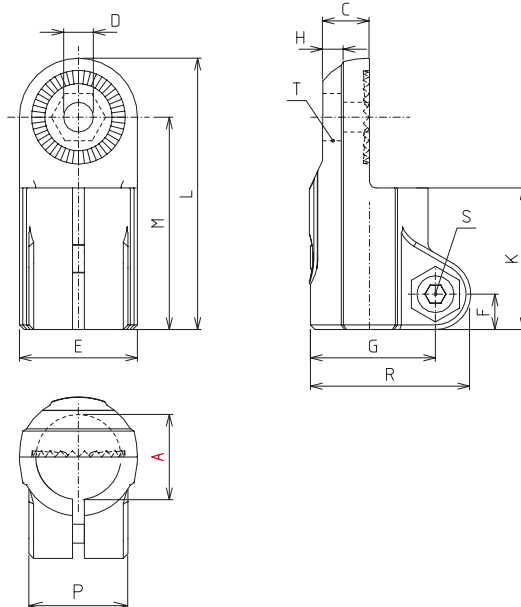
[mm]					
Code No.	Type	lot sizes	Clamping * A	Weight m [g]	Clamping lever S Code No.
K20830ACSV30	20-30	5, 10, 15... pcs	30	90	902381



Anti-twist system applicable with Type 30



15° toothing, internal



### Strap clamp LP-KU

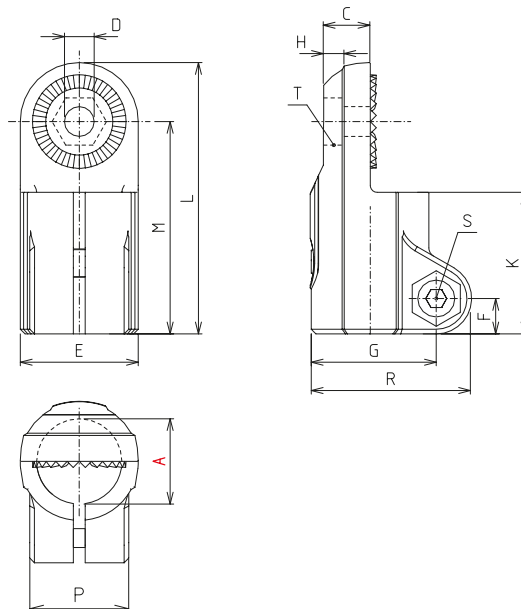
Code No.	Type	lot sizes	Clamping* A	C	D	E	F	G	H	K	L	M	P	R	T	Weight m [g]	Clamping lever S Code No.
K70118ACSR18	12-18	10, 20, 30... pcs	18	9,9	6,1	25	7,5	26,5	5,9	30	57,5	45	21	34	M6-DIN985	28	93024
K70130ACSR30	20-30	5, 10, 15... pcs	30	16,5	8,1	40	11	41,5	9,9	45	88	68	28,5	52,5	M8-DIN985	86	902381

[mm]

Anti-twist system applicable with Type 30



15° toothing, external



### Strap clamp LPZ-KU

Code No.	Type	lot sizes	Clamping* A	C	D	E	F	G	H	K	L	M	P	R	T	Weight m [g]	Clamping lever S Code No.
K71018ACSR18	12-18	10, 20, 30... pcs	18	9,9	6,1	25	7,5	26,5	5,9	30	57,5	45	21	34	M6-DIN985	28	93024
K71030ACSR30	20-30	5, 10, 15... pcs	30	16,5	8,1	40	11	43	9,9	45	88	68	28,5	52,5	M8-DIN985	87	902381

[mm]

\*Reduction of the diameter or cross section of the clamping with bushes possible (Accessories p. 54).

## RK Light Clamps

# Strap-/Hinge clamps

### Order instruction:

- Purchase only in lot sizes and a multiple of that, see product table below
- Inserts and bushes for diameter/cross-section changes see accessories page 54
- Standard: equipped and preassembled with galvanised screws
- Clamping levers have to be ordered separately, delivery unassembled See table last column and page 55

### On request:

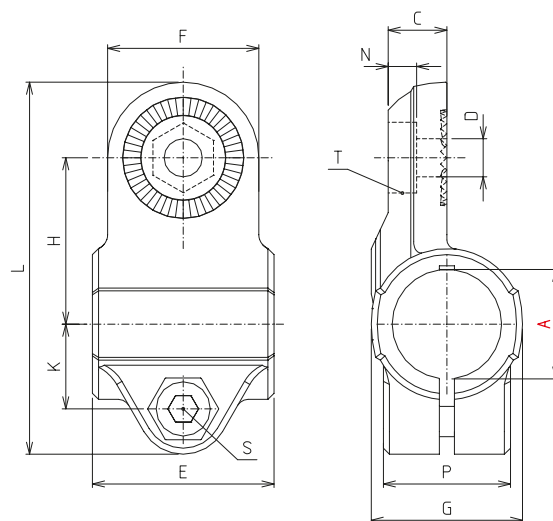
- Stainless screws



Anti-twist system applicable with Type 30



15° tooting, internal

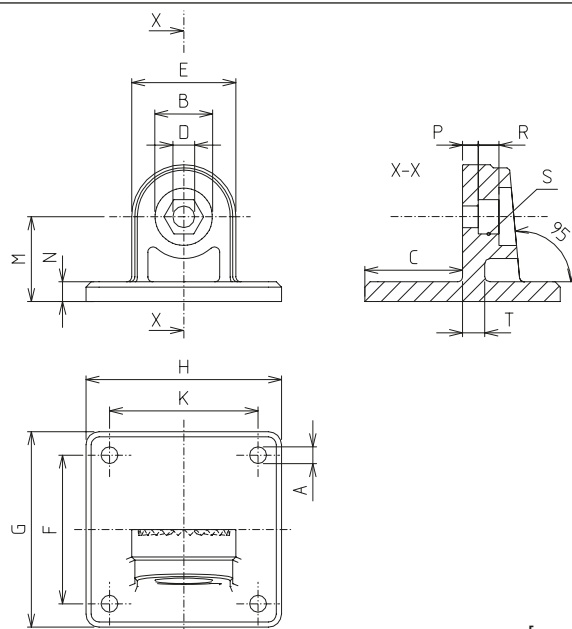


## Strap clamp LW-KU

Code No.	Type	lot sizes	Clamping* A	C	D	E	F	G	H	K	L	M	P	T	[mm]	
															Weight m [g]	Clamping lever S Code No.
K70018ACSR18	12-18	10, 20, 30... pcs	18	9,7	6,1	30	25	25	27,5	14	61,5	5,7	21	M6-DIN985	29	93024
K70030ACSR30	20-30	5, 10, 15... pcs	30	16,5	8,1	45	40	40	43	21,5	95,5	9,9	28,5	M8-DIN985	91	902381



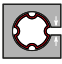
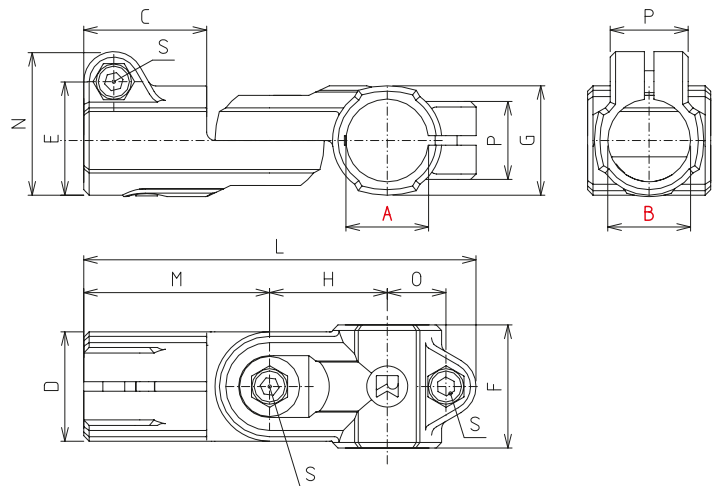
15° tooting, internal



## Strap clamp LF-KU

Code No.	Type	lot sizes	A	B	C	D	E	F	G	H	K**	M	N	P	R	S	T	[mm]	
																		Weight m [g]	
K70218ACS	12-18	10, 20, 30... pcs	5,3	15	25	6,1	25	40	50	35	0	20	5	4,5	5,5	M6-DIN985	5	17	
K70230ACS	20-30	5, 10, 15... pcs	6,5	22	37,5	8,1	40	60	75	75	60	32,5	7,5	6,6	8,2	M8-DIN985	7	77	

\*\* For Type 12-18, only 2 bores (centered) available.


**Anti-twist system**  
 applicable with Type 30


### Hinge clamp GW-KU (without tothing) GWZ-KU (with tothing)

[mm]

Code No.	Type	lot sizes	Clamping *		C	D	E	F	G	H	L	M	N	O	P	Weight m [g]	Clamping lever S Code No.
			A	B													
K80118ACS- R18R18	GW 12-18	10, 20, 30... pcs	18		30	25	26,5	30	25	27,5	94	45	34	14	21	67	93024
K80418ACS- R18R18	GWZ 12-18	10, 20, 30... pcs	18		30	25	26,5	30	25	27,5	94	45	34	14	21	67	93024
K80130ACS- R30R30	GW 20-30	5, 10, 15... pcs	30		45	40	41,5	45	40	43	143,5	68	52,5	32,5	28,5	177	902381
K80430ACS- R30R30	GWZ 20-30	5, 10, 15... pcs	30		45	40	41,5	45	40	43	143,5	68	52,5	32,5	28,5	178	902381

GW – without tothing, 180° infinitely  
 GWZ – with tothing, rotation of 180°, 15° intervals

\*Reduction of the diameter or cross section of the clamping with bushes possible (Accessories p. 54).

## RK Light Clamps

# Hinge clamp

### Order instruction:

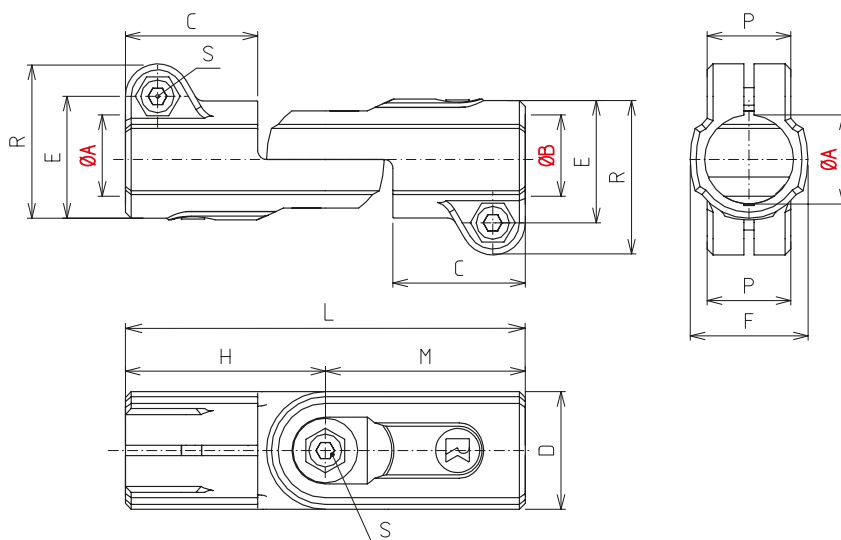
- Purchase only in lot sizes and a multiple of that, see product table below
- Inserts and bushes for diameter/cross-section changes see accessories page 54
- Standard: equipped and preassembled with galvanised screws
- Clamping levers have to be ordered separately, delivery unassembled  
See table last column and page 55

### On request:

- Stainless screws



Anti-twist system applicable with Type 30

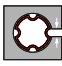
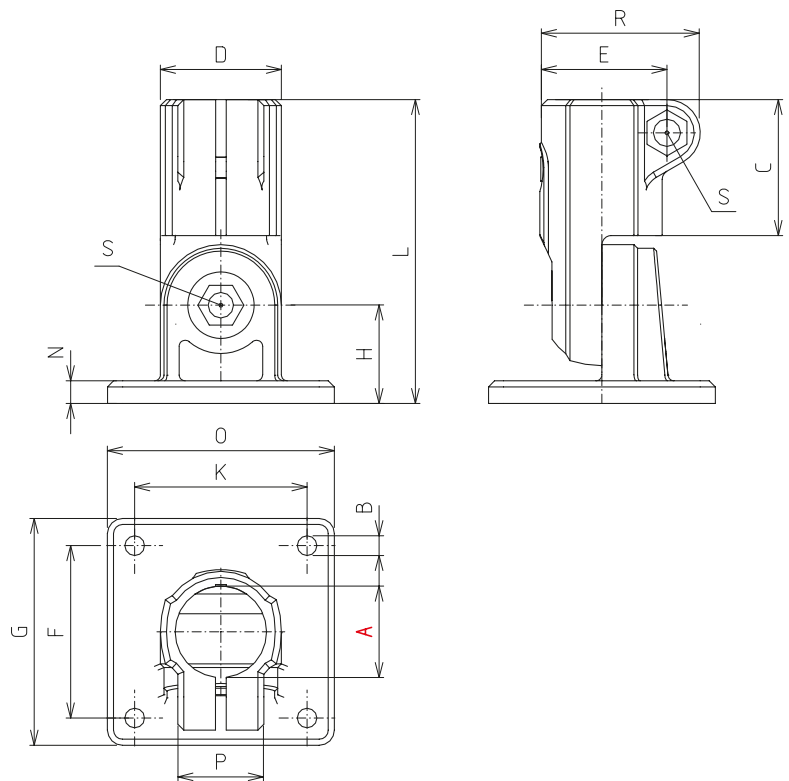


## Hinge clamp GP-KU (without tothing) GPZ-KU (with tothing)

[mm]

Code No.	Type	lot sizes	Clamping*		C	D	E	F	H	L	M	P	R	Weight m [g]	Clamping lever S Code No.
			A	B											
K80018ACSR18R18	GP 12-18	10, 20, 30... pcs	18		30	25	26,5	30	45	90	45	21	34	66	93024
K80518ACSR18R18	GPZ 12-18	10, 20, 30... pcs	18		30	25	26,5	30	45	90	45	21	34	66	93024
K80030ACSR30R30	GP 20-30	5, 10, 15... pcs	30		45	40	41,5	40	68	136	68	28,5	52,5	194	902381
K80530ACSR30R30	GPZ 20-30	5, 10, 15... pcs	30		45	40	41,5	40	68	136	68	28,5	52,5	194	902381

GP – without tothing, 180° infinitely  
GPZ – with tothing, rotation of 180°, 15° intervals


 Anti-twist system applicable with Type 30


### Hinge clamp GF-KU (without tothing) GFZ-KU (with tothing)

Code No.	Type	lot sizes	Clamping* A	B	C	D	E	F	G	H	K*	L	N	O	P	R	[mm]	
																	Weight m [g]	Clamping lever S Code No.
K80218ACSR18	GF 12-18	10, 20, 30... pcs	18	5,3	30	25	26,5	40	50	20	0	65	5	35	21	34	55	93024
K80718ACSR18	GFZ 12-18	10, 20, 30... pcs	18	5,3	30	25	26,5	40	50	20	0	65	5	35	21	34	55	93024
K80230ACSR30	GF 20-30	5, 10, 15... pcs	30	6,5	45	40	41,5	60	75	32,5	60	100,5	7,5	75	28,5	52,5	184	902381
K80730ACSR30	GFZ 20-30	5, 10, 15... pcs	30	6,5	45	40	41,5	60	75	32,5	60	100,5	7,5	75	28,5	52,5	185	902381

GF – without tothing, 180° infinitely  
GFZ – with tothing, rotation of 180°, 15° intervals

\*Reduction of the diameter or cross section of the clamping with bushes possible (Accessories p. 54).

## RK Light Clamps

# Ball joints

Version:

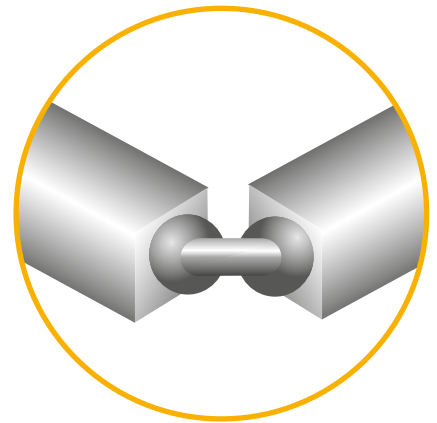
- Ball joint

delivery  
from stock



Single-piece elements

- For faster and more economic assembly



### RKLightClamps

- Easy
- Good value
- Variable

### Features:

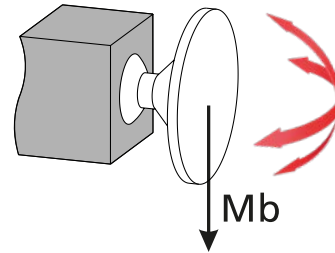
- can be pivoted freely by 60°/can be rotated 360°
- can be combined with tube connectors of sizes 18
- the clamps feature a universal connecting plate for flexible integration
- high-strength clamping thanks to special finishes



## Loads

Attention!

The data in the chart do not ensure a guarantee of quality or a warrant characteristic of our products. These are nonbinding standard values which might be not reached in individual cases due to the temperature or surface finish of the clamping profile.



Bending moment Mb [Nm]

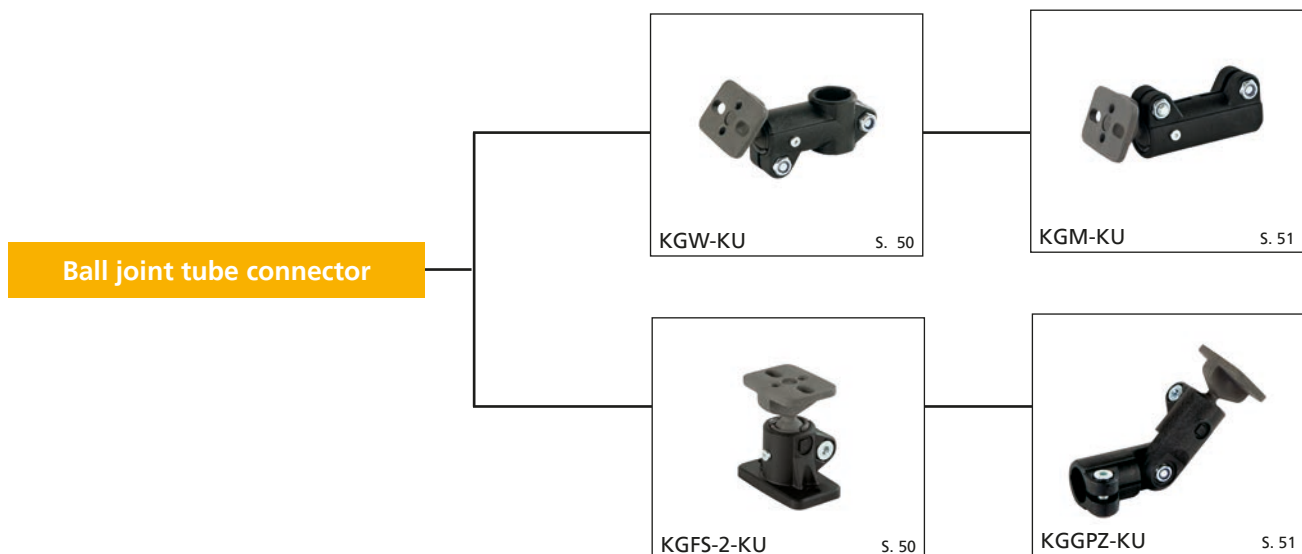
Size	18	30
Light Clamps (plastic)		
KGW-KU	8	-
KGFS-2-KU	5	-
KGM-KU	5	-
KGGPZ-KU	8	-

**Tightening torque  
of clamping screws:**

M6: 8 Nm  
M8: 25 Nm

Material data sheet  
available upon request.

## Overview



## RK Light Clamps

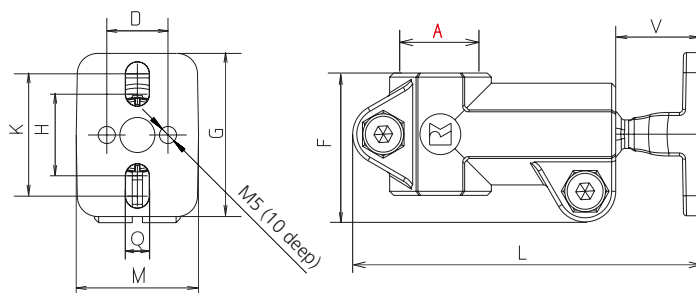
# Ball joints

### Order instruction:

- Purchase only in lot sizes and a multiple of that, see product table below
- Inserts and bushes for diameter/cross-section changes see accessories page 54
- Standard: equipped and preassembled with galvanised screws
- Clamping levers have to be ordered separately, delivery unassembled  
See table last column and page 55

### On request:

- Stainless screws

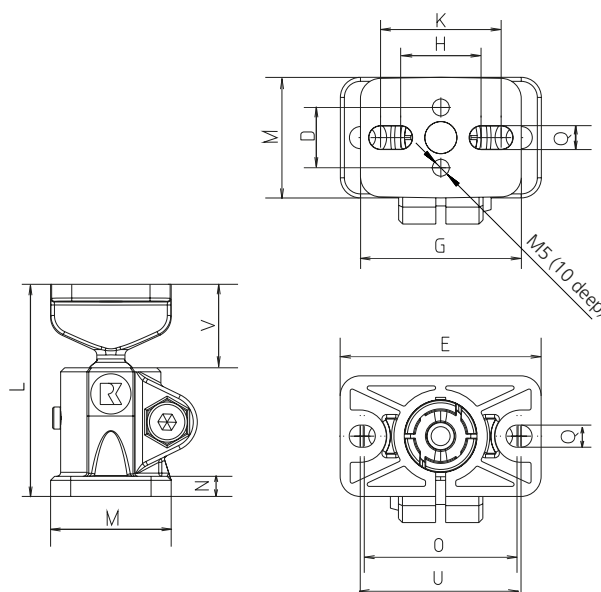


## Angle clamp KGW-KU 18

[mm]

Code No.	Type	Clamping A*	D	F	G	H	K	L	M	Q	V	m [g]
K13518ACSR18	KGW-KU 18	18,1	15	30	40	20	30	85	30	5,5	21	63

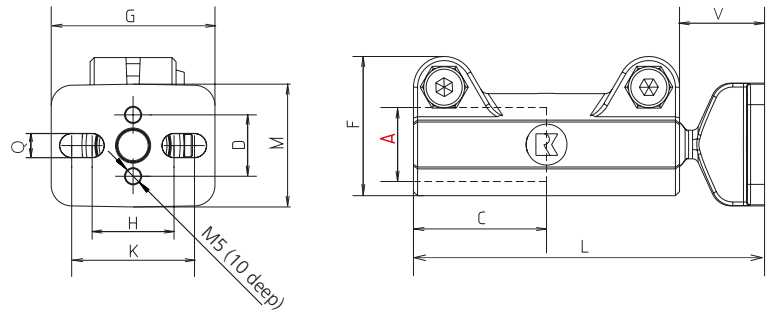
\*Reduction of the diameter or cross section of the clamping with bushes possible (Accessories p. 54).



## Base clamp KGFS-2-KU 18

[mm]

Code No.	Type	D	E	G	H	K	L	M	N	O	Q	U	V	m [g]
K33518ACS	KGFS-2-KU 18	15	50	40	20	30	53	30	5	38	5,5	40	21	49

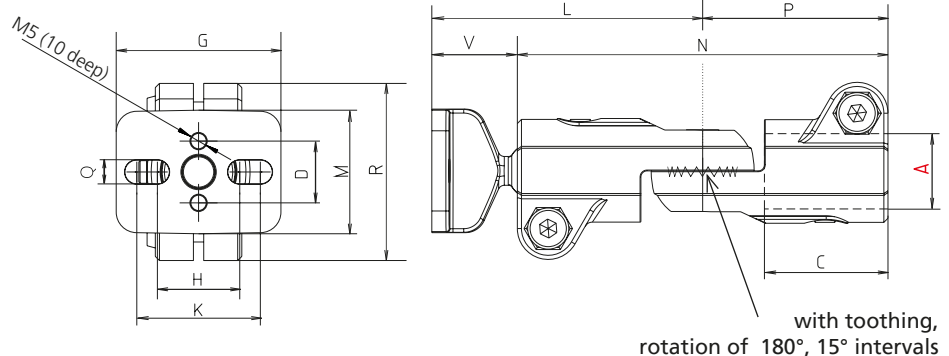


## Sleeve clamp KGM-KU 18

[mm]

Code No.	Type	Clamping A*	C	D	F	G	H	K	L	M	V	Q	m [g]
K43518ACSR18	KGM-KU 18	18,1	32,5	15	34	40	20	30	86	30	21	5,5	63

\*Reduction of the diameter or cross section of the clamping with bushes possible (Accessories p. 54).



## Hinge clamp KGGPZ-KU 18

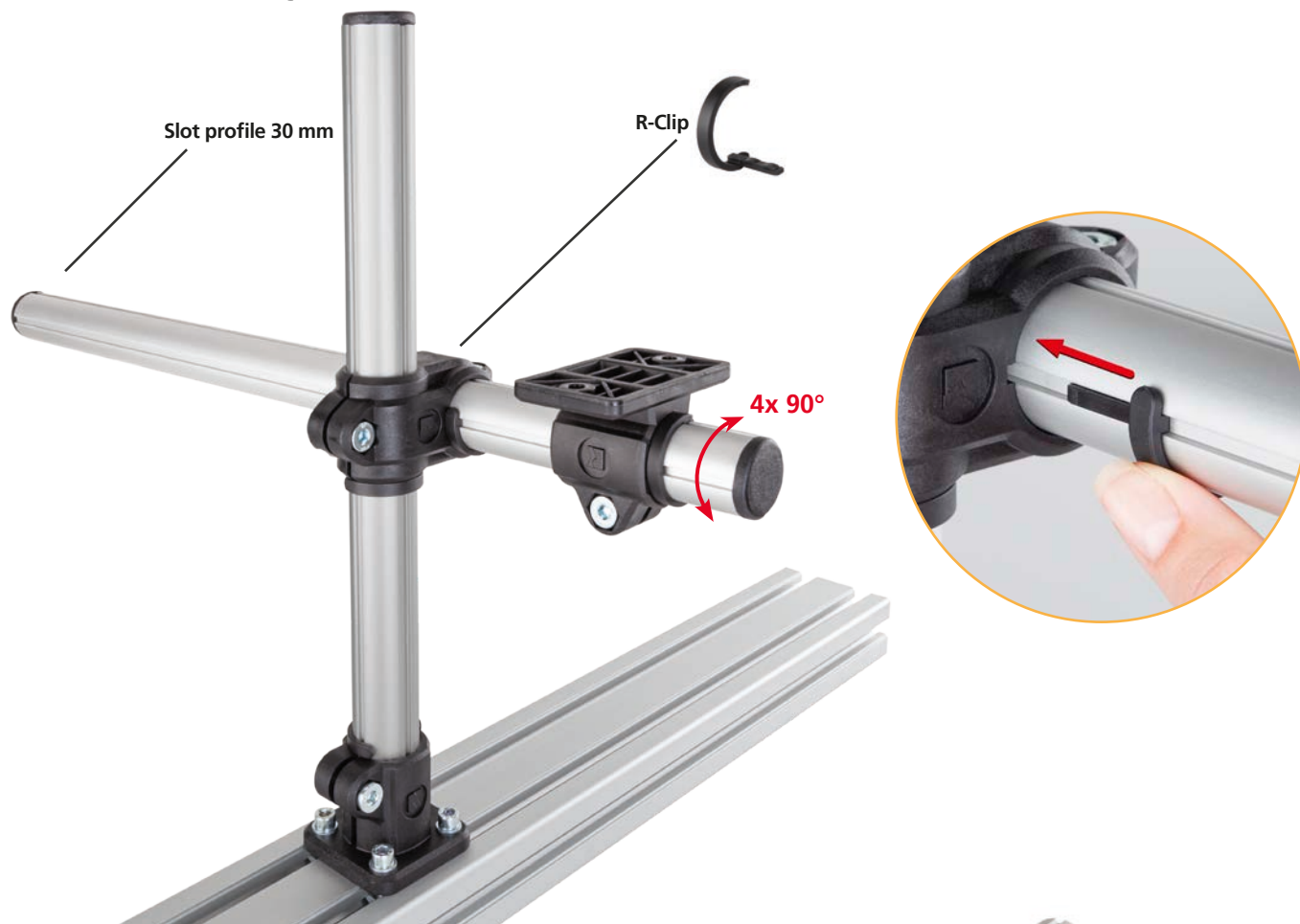
[mm]

Code No.	Type	Clamping A*	C	D	G	H	K	L	M	N	P	Q	R	V	m [g]
K83518ACSR18	KGGPZ-KU 18	18,1	30	15	40	20	30	66	30	90	45	5,5	43	21	80

\*Reduction of the diameter or cross section of the clamping with bushes possible (Accessories p. 54).

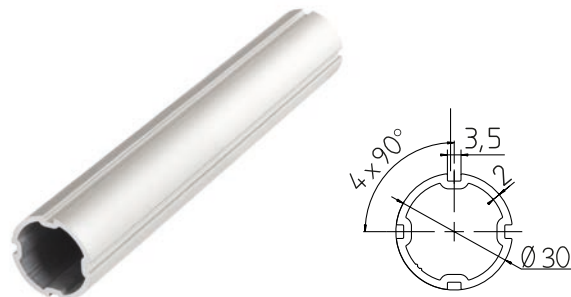
## RK Light Clamps

# Anti-Twist-System



### Slot profile

Code. No.	Type
9850002	slot profile 30 mm, standard length 6 m
9850003	slot profile 30 mm, Cut-to-length

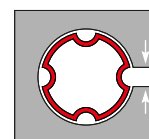


### R-Clip

Code. No.	Type	Slot sizes
9850001	R-Clip for slot profile 30 mm	10, 20, 30 ... pcs



RK Light Clamps	Version Ø 30 mm	Catalog page
Cross clamp	K-KU, KVR-KU	page 34, 35
Angle clamp	W-KU	page 36
Base clamp	FS-KU	page 37
Sleeve Clamp	M-KU	page 38
Flanch Clamp	FK-KU	page 39
Strap clamp	LP-KU, LPZ-KU, LW-KU	page 41, 42
Hinge clamp	GW-KU, GP-KU, GF-KU GWZ-KU, GPZ-KU, GF-KU	page 43-45



- anti-twist system can be used with one-piece RK Light Clamps (See table)
- See also product information page 31.



# Application examples

**RK ROSE+KRIEGER**

Mechanical engineering / plant engineering / special mechanical engineering



## Medicine / Laboratory / Chemistry / Pharma



Introduction

Selection guide

**Light Clamps**

Solid Clamps

Robust Clamps

EMS

Accessories

ITAS

RK Monitor Mounting

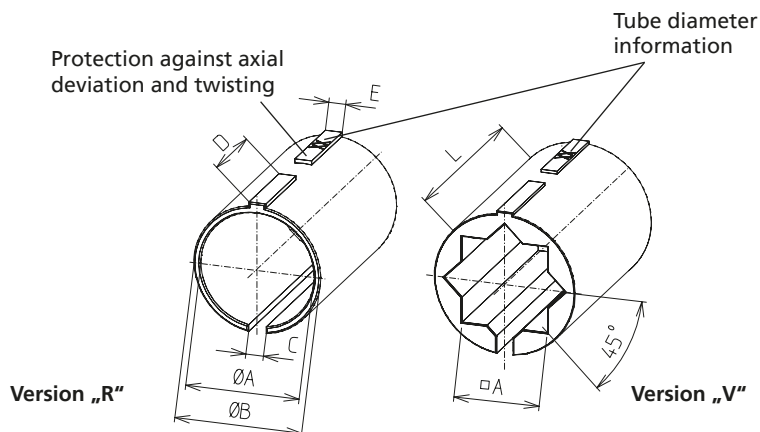
Appendix

# RK Light Clamps

## Accessories

### Order instruction:

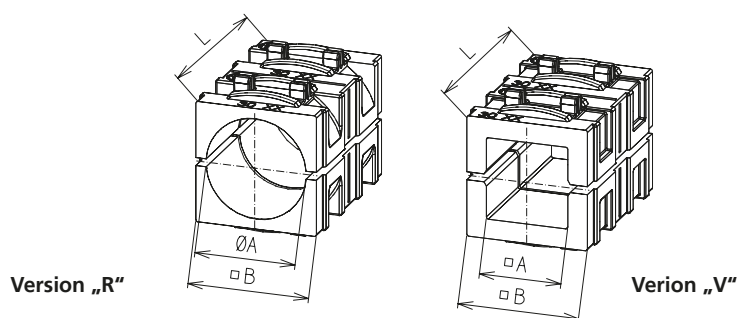
- Purchase only in lot sizes and a multiple of that, see product table below



### Reducing bushes for single-pcs elements

[mm]

Code No.	Type	Version	lot sizes	A + 0,1	B	C	D	E	L
96200AC	12-18	R12	10, 20, 30... pcs	12,25	18	2,5	11,9	2,4	30
96209AC	12-18	R13	10, 20, 30... pcs	13,25	18	2,5	11,9	2,4	30
96201AC	12-18	R14	10, 20, 30... pcs	14,25	18	2,5	11,9	2,4	30
96202AC	12-18	R15	10, 20, 30... pcs	15,25	18	2,5	11,9	2,4	30
96203AC	12-18	R16	10, 20, 30... pcs	16,25	18	2,5	11,9	2,4	30
96205AC	12-18	V10	10, 20, 30... pcs	10,25	18	2,5	11,9	2,4	30
96204AC	20-30	R20	5, 10, 15... pcs	20,25	30	3,5	18,9	3,4	45
96206AC	20-30	R25	5, 10, 15... pcs	25,25	30	3,5	18,9	3,4	45
96208AC	20-30	V20	5, 10, 15... pcs	20,25	30	3,5	18,9	3,4	45



### Reducing inserts for multi-pcs elements

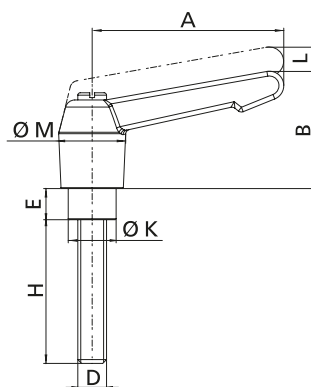
[mm]

Code No.	Type	Version	lot sizes	A	B	L
963000AC	20-30	R20	5, 10, 15... pcs	20,25	30,3	45
963002AC	20-30	R25	5, 10, 15... pcs	25,25	30,3	45
963004AC	20-30	R30	5, 10, 15... pcs	30,25	30,3	45
963001AC	20-30	V20	5, 10, 15... pcs	20,50	30,3	45
963003AC	20-30	V25	5, 10, 15... pcs	25,50	30,3	45

## Clamping lever



(Symbolic representation)



- The clamping lever enables the re-adjustment of the clamping element. This can be done by easy exchange of the cylinder screw.
- By lifting the grip, the free movement of the serration toothing enables the clamping lever to swing into the desired position. The grip moves into its original position when released.

**Material:** Grip made of polyamide, black, screws made of stainless steel

## Stainless steel (single-pcs elements)

[mm]

Code No.	Type	A	B	D	E	H	K	L	M
93024	12-18	40	26	M6	10	18	10	3,5	14,5
902381	20-30	65	35	M8	14	25	13	4	19,5



## Screws – Steel, zinc-plated

[mm]

Code No.	Type	lot sizes	Size	Description
40061601	12-18	100, 200, 300... pcs	M6x18 / DIN 7984	Socket head cap screw
40061161			M6 / DIN 985	Hexagonal nut
40061801	20-30	100, 200, 300... pcs	M8x16 / DIN 7984	Socket head cap screw
40061851			M8x25 / DIN 7984	Socket head cap screw
40061181			M8 / DIN 985	Hexagonal nut



## Screws – Stainless steel

[mm]

Code No.	Type	lot sizes	Size	Description
40091601	12-18	100, 200, 300... pcs	M6x18 / DIN 7984	Socket head cap screw
40091161			M6 / DIN 985	Hexagonal nut
40091801	20-30	100, 200, 300... pcs	M8x16 / DIN 7984	Socket head cap screw
40091851			M8x25 / DIN 7984	Socket head cap screw
40091181			M8 / DIN 985	Hexagonal nut

## Overview - Resistance to chemicals

Medium	resistant	conditionally resistant	not resistant
Acetic acid		◐	
Aqua regia			○
Benzene + Fuel	●		
Benzole	●		
Brake fluid	●		
Butane	●		
Butanol	●		
Butyl acetate	●		
Carbon Tetrachloride	●		
Caustic soda	●		
Chloroflourocarbon	●		
Chloroform		◐	
Cresol		◐	
Dekalin	●		
Dibutyl phthalate	●		
Diesel	●		
Dimethylformamide		◐	
Dioctyl phthalate	●		
Dioxan	●		
Engine oils	●		
Ethanol		◐	
Fats + Waxes	●		
Fatty acids	●		
Gear oil	●		
Glycol		◐	
Glystantin	●		
Glycerine	●		
Heating oil	●		
Heptane, Hexane	●		
Hydraulic oil	●		
Hydrochloric acid			○
Isopropanol	●		
Isooctane	●		
Methanol		◐	
Methylene chloride			○
Mineral oils		◐	
Naphthalene	●	◐	
Ozone			○
Phenol		◐	
Phosphoric acid		◐	

Medium	resistant	conditionally resistant	not resistant
Potassium hypochloride			○
Sulphuric acid			○
Silicone oil	●		
Styrolene	●		
Tetrahydrofurane	●		
Toluol	●		
Trichlorethylene		◐	
Water	●		
Xylene		◐	

This table is valid for all the clamping elements of the RK Light-Clamps programme.  
 The indications in the table are provided without guarantee, being the materials behaviour under real application conditions affected by different factors i.e. temperature, substance concentration, short-term or permanent presence of chemicalp.

Material	Reinforced polyamide
Working temperature	
0°C to 80°C	always
-30°C to 120°C	temporary

